



BARLEY NATURAL PRODUCT DATA SHEET Natural barley starch

GENERAL DESCRIPTION

- BARLEY NATURAL is a native barley starch with excellent microbiological status.
- INCI Name: Hordeum Vulgare Seed Flour
- CAS No.: 85251-64-5
- EINECS/ELINCS No.: 286-476-2
- Appearance: white powder
- Odour/Taste: neutral, pure

ANALYSIS DATA

- | | | |
|-------------------|----------------|---------------|
| • Moisture: | max. 10,0% | ISO 1666 |
| • pH-value: | 4,5 – 7,0 | 10% slurry |
| • Ash (in s.): | max. 0,5% | 650 °C |
| • Protein: | max. 0,6% | |
| • Crude fat: | max. 1% | |
| • Nitrogen: | max. 0,1% | |
| • Sieve analysis: | max. 1% > 45µm | air jet sieve |

MICROBIOLOGY

- | | | |
|---------------------------|--------------|-----------------|
| • Total plate count: | max. 100/g | ISO/Pharm. Eur. |
| • Mould: | max. 20/g | ISO/Pharm. Eur. |
| • Yeast: | max. 20/g | ISO/Pharm. Eur. |
| • E. coli: | negative/g | ISO/Pharm. Eur. |
| • Staphylococcus aureus: | negative/g | ISO/Pharm. Eur. |
| • Pseudomonas aeruginosa: | negative/g | ISO/Pharm. Eur. |
| • Salmonella: | negative/25g | ISO/Pharm. Eur. |

STERILIZATION

- Low bacterial count by heat sterilization.

PACKAGING

- In multiply paper bags of 25 kg on pallets of 750 kg each

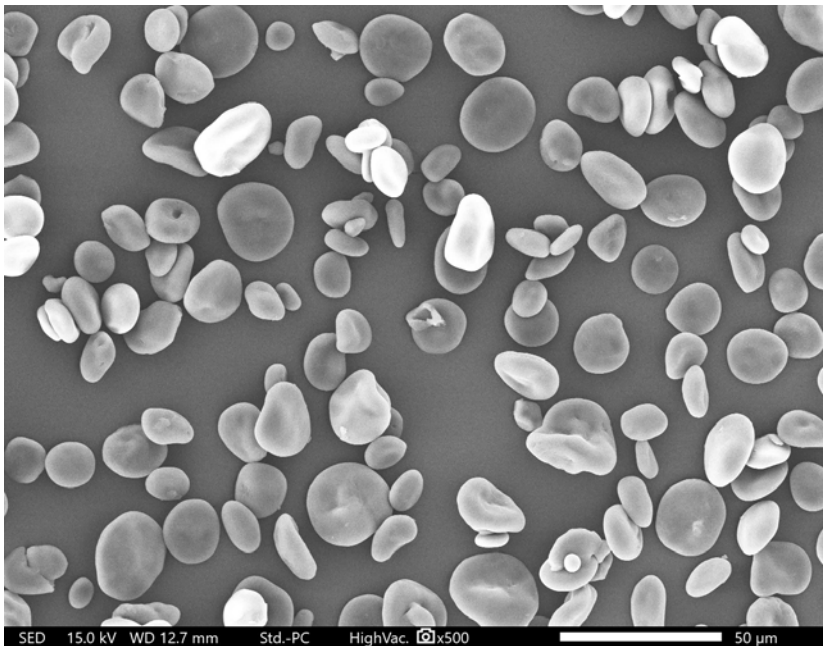
CUSTOMS TARIFF NUMBER

- 11081990

STORAGE AND SHELF-LIFE

- If properly stored under dry conditions: min. 60 months

Powder properties



- Particle Size ~16µm average (Laser diffraction)
- Free flowing fine powder

Applications

- Hair Care: Because of fine powder, useful in dry shampoo and further aerosol hair care products. It provides smooth & natural feel with good volume development
- Skin Care: It offers a light scattering effect to that of young skin which results in a nude look that corrects freckles and dark spots. It instantly blurs appearance of wrinkles by softening edges though light diffusion.
- Colour Cosmetic: It reduces tackiness and provides a soft feel while replacing synthetic ingredients like Nylon-12 or PMMA.

Above stated information is indicative only and no responsibility can be assumed. Recommendation is made to check suitability of our product by doing tests on your own.